



### DESCRIPTION

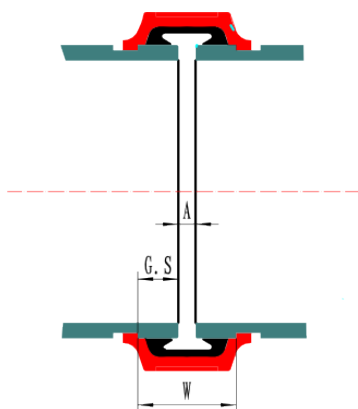
Rigid couplings are the standard rigid couplings used in general piping applications where rigidity is required. Rigidity is obtained through puzzle pad closing and grip teeth in the housing that attach to the pipe.

Sizes available: 1" - 10"  
Working pressure: 300 PSI / 2068 Kpa

### MATERIAL SPECIFICATIONS

- Housing:**  
Ductile iron conform to ASTM A536
- Coating:**
  - Galvanized
  - Red paint coating: RAL 3000
- Rubber gasket:**  
EPDM gaskets dispose of the international certifications and have undergone the aging test at 110°C (230°F) during a period of 45 days (1080 hours) and the frozen test at -40°C (-40°F) during a period of 4 days (96 hours).  
Working temperature gaskets: -34°C to 110°C (-29°F to 230°F).
- Bolts and Nuts:**  
Medium carbon steel, threaded BSPT, zinc electroplated, quenched and tempered.

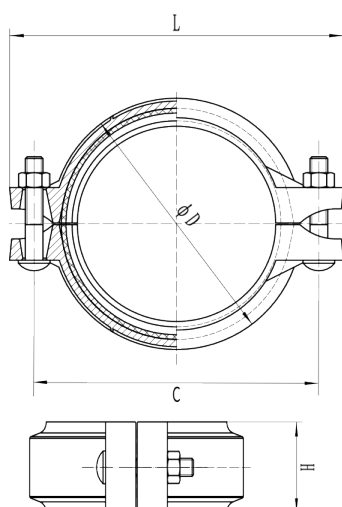
### GAP BETWEEN TWO PIPES



Reference		Size	O.D.	DN	W	G.S (mm)			Gap between two pipes (A) (mm)	
Red	Galva	Inch	mm	mm	mm	Basic	Max.	Min.	Max.	Min.
GKSR	GKSG	1	33,7	25	34	15,88	16,64	15,12	1,58	0
GKSR	GKSG	1¼	42,4	32	34	15,88	16,64	15,12	1,58	0
GKSR	GKSG	1½	48,3	40	34	15,88	16,64	15,12	3,28	0,24
GKSR	GKSG	2	60,3	50	35	15,88	16,64	15,12	2,18	0
GKSR	GKSG	2½	76,1	65	35	15,88	16,64	15,12	1,48	0
GKSR	GKSG	3	88,9	80	35	15,88	16,64	15,12	3,98	0,94
GKSR	GKSG	4	114,3	100	36	15,88	16,64	15,12	2,18	0
GKSR	GKSG	5	139,7	125	37	15,88	16,64	15,12	2,38	0
GKSR	GKSG	6	168,3	150	38	15,88	16,64	15,12	2,38	0
GKSR	GKSG	8	219,1	200	44	19,05	19,81	18,29	3,88	0,8
GKSR	GKSG	10	273,0	250	47	19,05	19,81	18,29	7,38	0,7

The actual gap between the pipes may change according to the actual cut and roll groove.

### DIMENSIONS



Reference		Size	O.D.	DN	Nominal dimensions				Bolt Size	Nuts	Socket wrench	Weight
Red	Galva	Inch	mm	mm	ØD mm	L mm	H mm	C mm	(d1 x L)	mm	mm	kg
GKSR	GKSG	1	33,7	25	55	97	45	73	M10*40	21,8	15	0,42
GKSR	GKSG	1¼	42,4	32	63,5	107,5	45	84	M10*50	21,8	15	0,51
GKSR	GKSG	1½	48,3	40	69	114	45	90	M10*50	21,8	15	0,53
GKSR	GKSG	2	60,3	50	83,6	124	46	102	M10*60	21,8	15	0,68
GKSR	GKSG	2½	76,1	65	98	139	46	115	M10*60	21,8	15	0,80
GKSR	GKSG	3	88,9	80	114	156	46	132	M10*60	21,8	15	0,96
GKSR	GKSG	4	114,3	100	142	189	50	162	M12*70	26,0	18	1,32
GKSR	GKSG	5	139,7	125	170	222	50	192	M12*70	26,0	18	1,74
GKSR	GKSG	6	168,3	150	198	251	50	222	M12*70	26,0	18	2,06
GKSR	GKSG	8	219,1	200	260	322	58	282	M16*85	34,5	24	3,89
GKSR	GKSG	10	273,0	250	319	393	64	352	M20*110	42,8	30	6,39