

3.12 DISCHARGE NOZZLES

(PART No. 310.205.001 to 310.205.027)

The Discharge Nozzles are available in a 180° and 360° pattern and are designed to uniformly distribute FM200 throughout the hazard area. The aim of the nozzles is to be clearly indicated on the approved drawing.

The 180° type has seven ports and the 360° type has eight ports.

For Pre-engineered systems the nozzles are available pre-drilled in three sizes.

Engineered nozzles are available in seven sizes and are drilled with the specific design requirement (refer to tables 6 to 19).

Nozzle types and part numbers are detailed in Table 22.

Maximum areas of coverage for each nozzle type are indicated in Fig. 1.

Maximum coverage height for the nozzles is 4.87 metres.

The maximum quantity of agent to be discharged from one nozzle is 100 kg.

Where the size of any hazard enclosure determines that one nozzle does not provide coverage within the above parameters the hazard should be theoretically sub-divided into appropriately sized modules.

Nozzles should be located no more than 300mm below ceilings. The 180° pattern nozzle should be located no more than 300mm from the wall.

Nozzles are provided in aluminium as standard, but are available in brass or stainless steel to order.

Nozzle Type	Part No.	
	Pre-Engineered	Engineered
10mm (180°)	Not available	310.205.022
15mm (180°)	Not available	310.205.011
20mm (180°)	Not available	310.205.024
25mm (180°)	310.205.001	310.205.012
32mm (180°)	Not available	310.205.026
40mm (180°)	310.205.003	310.205.013
50mm (180°)	310.205.005	310.205.014
10mm (360°)	Not available	310.205.023
15mm (360°)	Not available	310.205.015
20mm (360°)	Not available	310.205.025
25mm (360°)	310.205.002	310.205.016
32mm (360°)	Not available	310.205.027
40mm (360°)	310.205.004	310.205.017
50mm (360°)	310.205.006	310.205.018

Table 22 Nozzle Types and Part Numbers

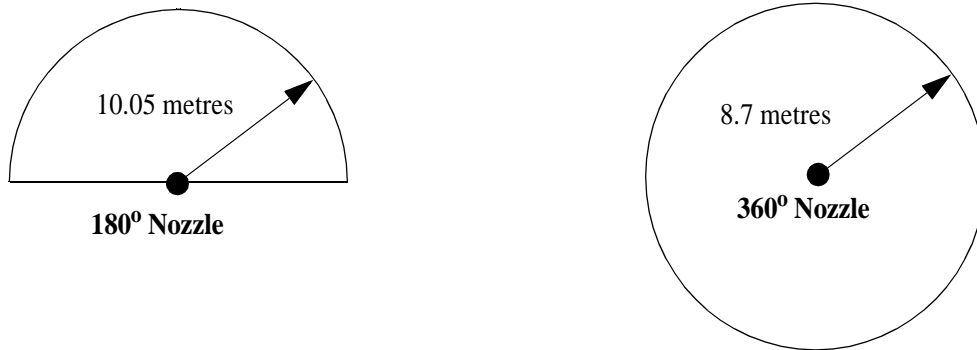
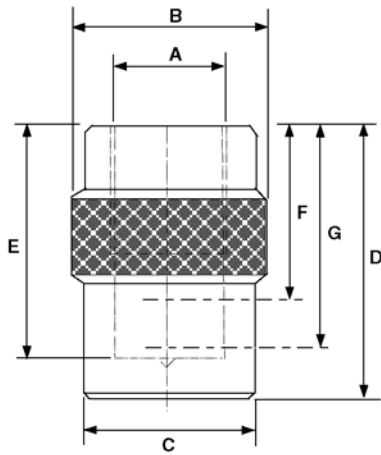


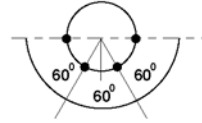
Fig. 1 Nozzle Coverage

A (Thread)	10mm NPT	15mm NPT	20mm NPT	25mm NPT	32mm NPT	40mm NPT	50mm NPT
B	25.0mm	29.0mm	35.0mm	41.0mm	50.0mm	60.0mm	76.0mm
C	22.0mm	27.0mm	32.0mm	38.0mm	47.0mm	57.0mm	70.0mm
D	33.5mm	41.0mm	47.0mm	52.0mm	62.0mm	68.0mm	89.0mm
E	28.0mm	35.0mm	41.0mm	46.5mm	56.0mm	60.0mm	78.0mm
F	21.0mm	26.0mm	29.0mm	32.0mm	38.0mm	41.0mm	53.0mm
G	26.0mm	31.0mm	37.0mm	40.0mm	49.0mm	52.0mm	67.0mm

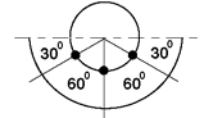


LOCATION OF PORTS
ON ENGINEERED
NOZZLE

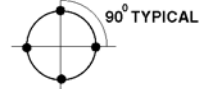
FOR 7 PORT NOZZLE, 4 PORTS ARE
AT 'F' LOCATION AS INDICATED BELOW



3 PORTS ARE AT 'G' LOCATION
AS INDICATED BELOW



FOR 8 PORT NOZZLE, 4 PORTS ARE
AT 'F' LOCATION AS INDICATED BELOW



4 PORTS ARE AT 'G' LOCATION
AS INDICATED BELOW

