

DESCRIPTION

Sprinkler outlets are designed for direct connection of sprinkler heads.

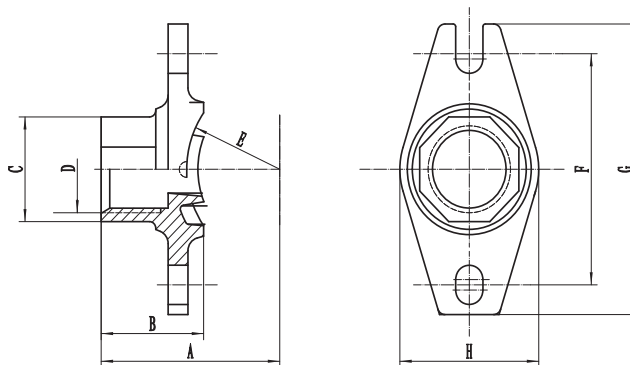
Sizes available: 1 x 1/2" - 2 x 1"

Working pressure: 300 PSI / 2068 Kpa

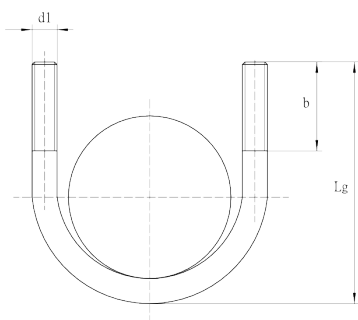
MATERIAL SPECIFICATIONS

- **Housing:**
Ductile iron conform to ASTM A536
- **Coating:**
 - Galvanized
 - Red paint coating: RAL 3000
- **Rubber gasket:**
EPDM gaskets dispose of the international certifications and have undergone the aging test at 110°C (230°F) during a period of 45 days (1080 hours) and the frozen test at -40°C (-40°F) during a period of 4 days (96 hours).
Working temperature gaskets: -34°C to 110°C (-29°F to 230°F).
- **U-Bolt and Nuts:**
Medium carbon steel, threaded BSPT, zinc electroplated, quenched and tempered.

DIMENSIONS

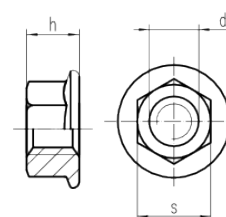


Reference		Size	O.D.	Nominal DN	Nominal Dimensions								Hole Cut	Bolt size	Nuts	Socket wrench	Bolt Torque	Weight
Red	Galva	Inch	mm	mm	A mm	B mm	C mm	D inch	E mm	F mm	G mm	H mm	mm	(d1 x Lg)	mm	mm	N*M	Kg
GSTR	GSTG	1 - 1/2	33,7 x 21,3	25 - 15	53	40	29	1/2	17,7	60	89	56	25+1	M8*44	16,9	13	20-30	0,33
GSTR	GSTG	1 1/4 - 1/2	42,4 x 21,3	32 - 15	50	46	28	1/2	22,2	76	89	56	30+1	M10*78	21,8	15	60-70	0,42
GSTR	GSTG	1 1/4 - 3/4	42,4 x 26,9	32 - 20	53	49	33	3/4	22,2	76	89	56	30+1	M10*78	21,8	15	60-70	0,46
GSTR	GSTG	1 1/4 - 1	42,4 x 33,7	32 - 25	58	54	40	1	22,3	76	89	56	30+1	M10*78	21,8	15	60-70	0,49
GSTR	GSTG	1 1/2 - 1/2	48,3 x 21,3	40 - 15	49	39	28	1/2	25,15	76	89	56	30+1	M10*78	21,8	15	60-70	0,38
GSTR	GSTG	1 1/2 - 3/4	48,3 x 26,9	40 - 20	52	42	33	3/4	25,16	76	89	56	30+1	M10*78	21,8	15	60-70	0,38
GSTR	GSTG	1 1/2 - 1	48,3 x 33,7	40 - 25	55	45	40	1	25,16	76	89	56	30+1	M10*78	21,8	15	60-70	0,41
GSTR	GSTG	2 - 1/2	60,3 x 21,3	50 - 15	58	36,6	28	1/2	31,2	78	98	56	30+1	M10*92	21,8	15	60-70	0,45
GSTR	GSTG	2 - 3/4	60,3 x 26,9	50 - 20	61	39,6	33	3/4	31,2	78	98	56	30+1	M10*92	21,8	15	60-70	0,45
GSTR	GSTG	2 - 1	60,3 x 33,7	50 - 25	66	44,6	40	1	31,2	78	98	56	30+1	M10*92	21,8	15	60-70	0,47



U-BOLT AND NUTS

	DN 25	DN 32-40	DN 50
d1	M8	M10	M10
b	22	32	38
Lg	48	78	93



	M8	M10
d1		
h	8	10
s	13	15