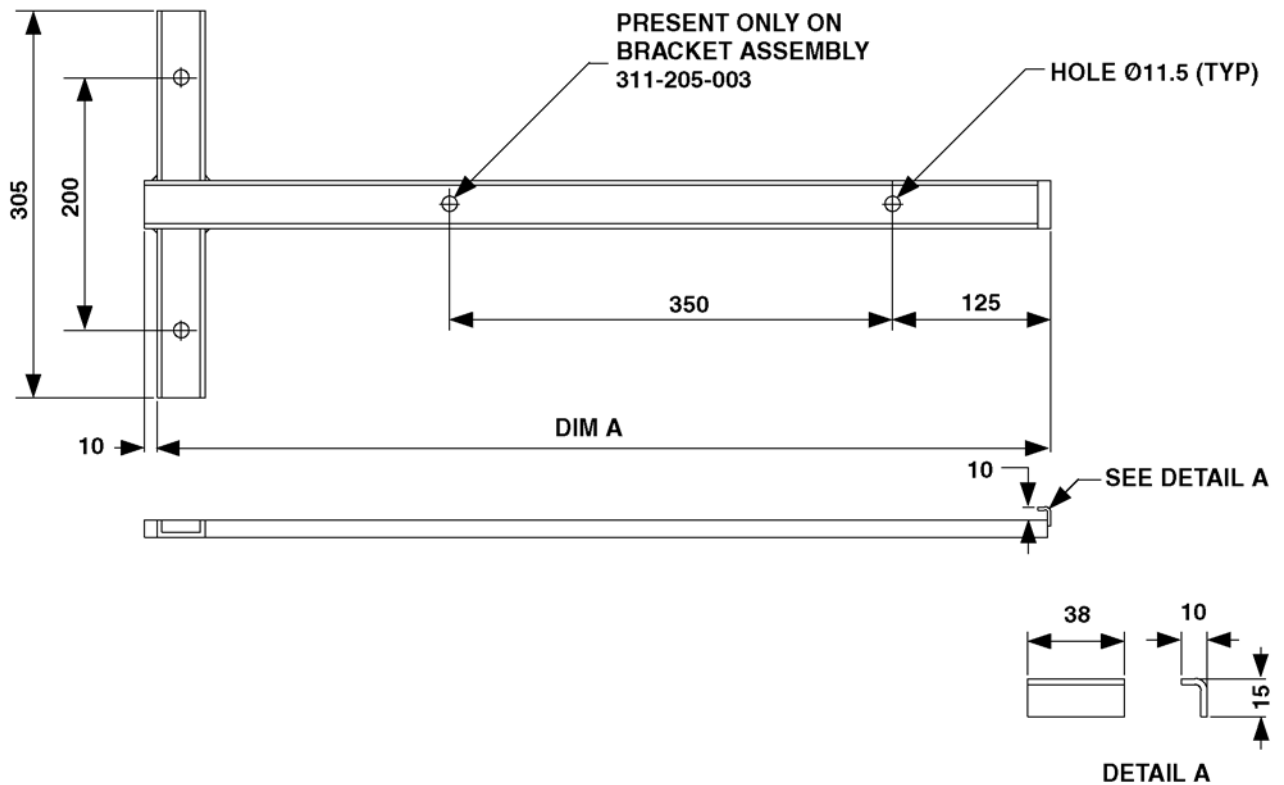


**3.13 CONTAINER BRACKETS**
**3.13.1 6.5/13/25.5 LITRE**

(PART No. 311.205.001 to 311.205.003)

The Container Brackets are designed to securely fix a single container to a wall or supporting structure.

The Brackets are of a design that allows them to be wall mounted. They comprise of a steel cruciform section which is fixed to the wall or supporting structure and a steel strap (not shown) used to firmly secure the container to the bracket. A lug at the bottom of the vertical back section is used to support the weight of the container. The strap is fixed around the container to the horizontal back section using nuts and bolts.



Part No.	DIM A
311-205-001	172
311-205-002	375
311-205-003	715

**Part No. 311-205-001 to 311-205-003 6.5/13/25.5 Litre Container Bracket**

**3.13.2 CONTAINER BRACKETS**  
**52/106/147/180 LITRE**

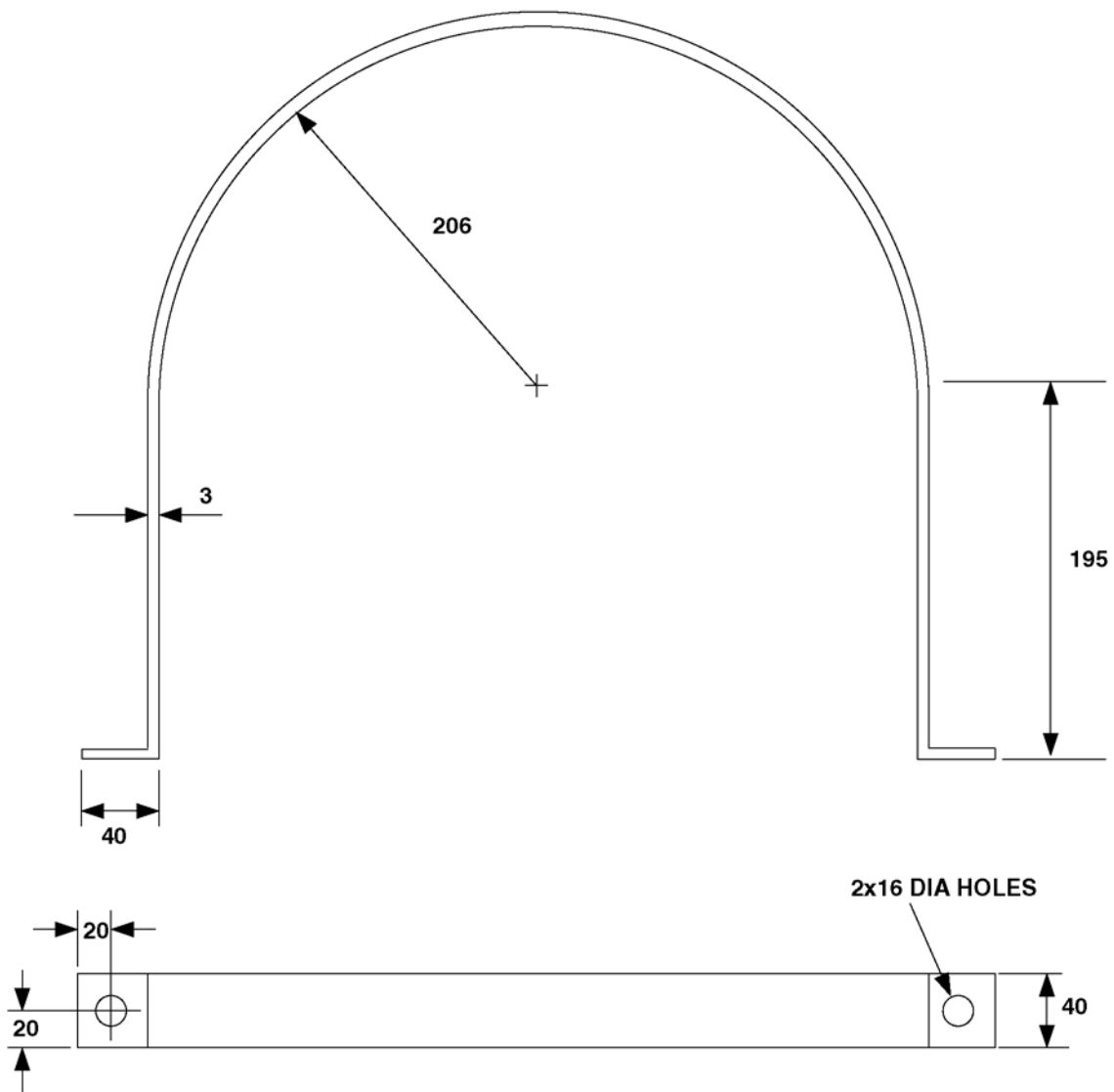
(PART No. 311.205.004)

The Container Brackets are designed to securely fix a single container to a wall or supporting structure. The containers are to be floor mounted only.

The bracket assembly comprises a steel strap, steel channel section (not shown) and two spring nuts and bolts (not shown).

Container Size	Bracket Centreline From Floor (mm)
52 litre	350mm
106 litre	780mm
147 litre	1110mm
180 litre	1390mm

**Table. 23 Bracket Height Details**



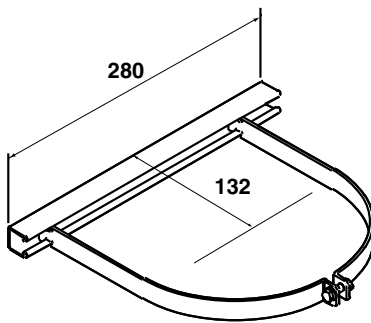
**3.13.3 CONTAINER BRACKETS  
4.5/8/16/32 LITRE CONTAINERS**

The Container Brackets are designed to securely fix a single container to a wall or supporting structure. The containers are to be floor mounted only.

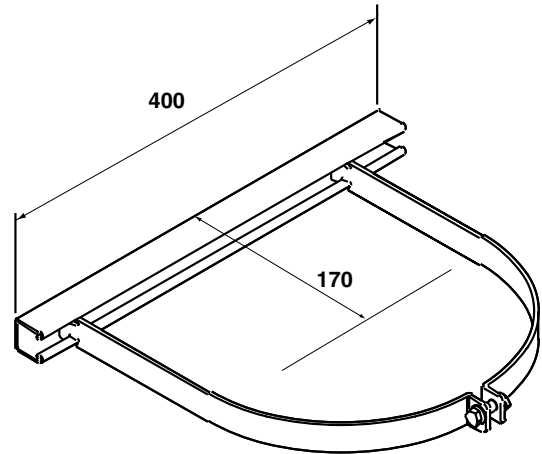
The bracket assembly comprises two steel straps, steel channel section (400mm long) and nut and bolt.

Container Size	Bracket Centreline From Floor (mm)
4.5	130mm
8 litre	170mm
16 litre	370mm
32 litre	710mm

**Table. 23a Bracket Height Details**



**Part No. 311.205.020 4.5 Litre Container Bracket**



**Part No. 311-207.001 8/16/32 Litre Container Bracket**

**3.13.4 CONTAINER BRACKET -  
40 LITRE CONTAINERS**

Net weight 3.0 kgs

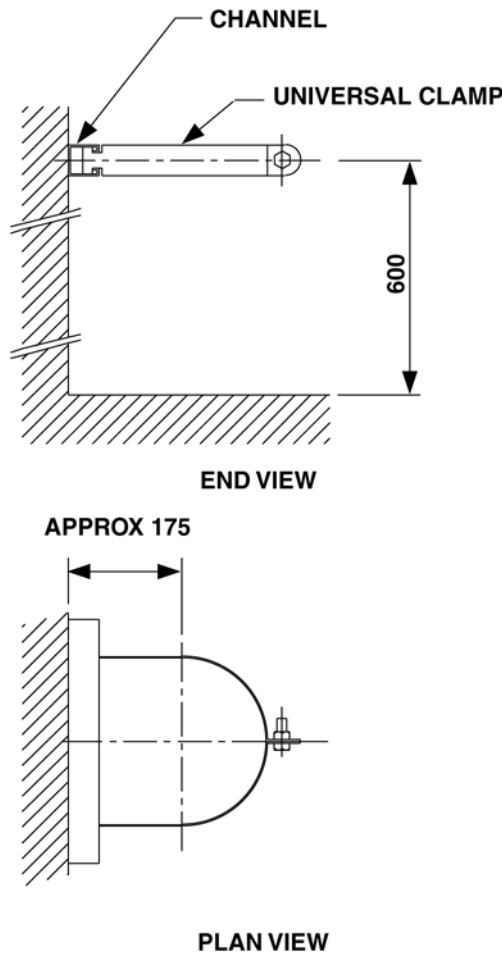
(PART No. 311.205.016)

The bracket is designed to securely fix containers to a wall or supporting structure. It comprises of a section of steel channel, a universal clamp, nut and bolt.

The steel channel sections are fixed securely to the wall or supporting structure. The universal clamp has a special slotted section which allows each half to be fitted into the steel channel. The two halves are clamped together in position around the container using a nut and bolt.

Container Size	Steel Channel Part No.
1 x 40 Litre	1 x 311.205.016

**Table. 24 40 Litre Container Bracket Details**



**Part No. 311.205.016 40 Litre Container Bracket**

**3.13.5 CONTAINER BRACKETS -  
67.5/80 LITRE CONTAINERS**

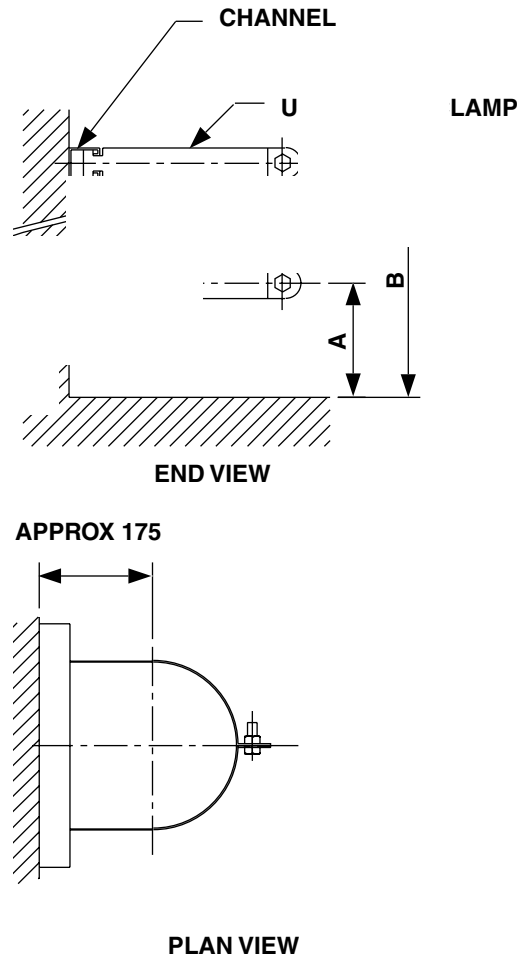
Net weight 3.0 kgs

(PART No. 311.205.017 &amp; 311.205.018)

The bracket is designed to securely fix containers to a wall or supporting structure. It comprises of a section of steel channel, a pair of universal clamps, two nuts and bolts.

The steel channel sections are fixed securely to the wall or supporting structure. The universal clamps have a special slotted section which allows each half to be fitted into the steel channel. The two halves are clamped together in position around the container using a nut and bolt. Each 80 litre container requires two brackets.

Container Size	Steel Channel Part No.	A	B
1 x 67.5 Litre	2 x 311.205.017	550mm	1270mm
1 x 80 Litre	2 x 311.205.018	600mm	1400mm

**Table. 24a 80 Litre Container Bracket Details**


Part No. 311.205.017 &amp; 311.205.018