



### DESCRIPTION

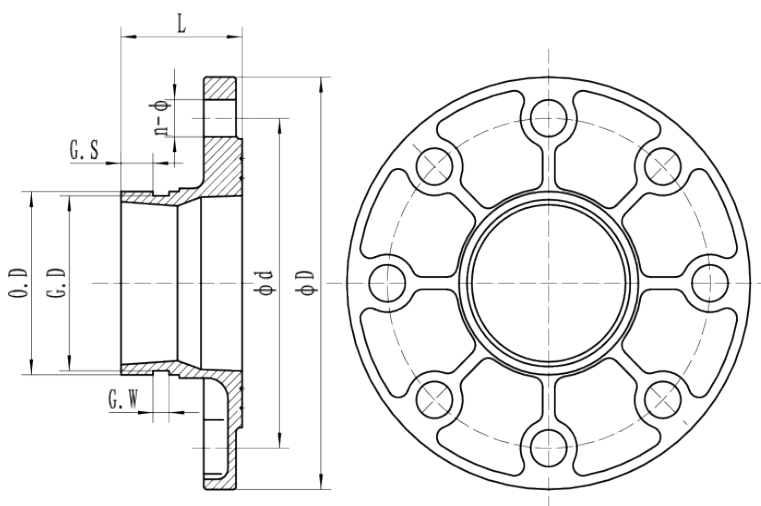
Grooved adaptor flanges allow the connection between flanged and grooved end equipment.

Sizes available: 2" - 8"  
 Working pressure:  
 300 PSI / 2068 Kpa (FM)  
 175 PSI / 1206 Kpa (UL)

### MATERIAL SPECIFICATIONS

- **Housing:**  
 Ductile iron conform to ASTM A536 65-45-12
- **Coating:**
  - Galvanized
  - Red paint coating: RAL 3000

### DIMENSIONS



Reference		Size	O.D	Nominal Dimensions					DØ	L	Weight
Red	Galva	Inch	mm	G.D mm	G.S mm	G.W mm	nØ mm	dØ mm	mm	mm	Kg
GAF16R	GAF16G	2	60,3	57,2	15,88	7,93	4-18	125	165	60	1,50
GAF16R	GAF16G	2½	76,1	72,3	15,88	7,93	4-18	145	185	60	1,75
GAF16R	GAF16G	3	88,9	84,9	15,88	7,93	8-18	160	200	60	2,05
GAF16R	GAF16G	4	114,3	110,1	15,88	9,53	8-18	180	220	60	2,45
GAF16R	GAF16G	5	139,7	135,5	15,88	9,53	8-18	210	250	65	3,40
GAF16R	GAF16G	6	168,3	164,4	15,88	9,53	8-22	240	285	65	4,50
GAF16R	GAF16G	8	219,1	214,4	19,05	11,1	12-22	295	340	70	5,95