

3.15 MANIFOLD CHECK VALVES

(PART Nos. 302.205.008/009)

The manifold check valve is designed to prevent a major loss of agent during a discharge from the manifold outlet in the event that a container has been removed from the system.

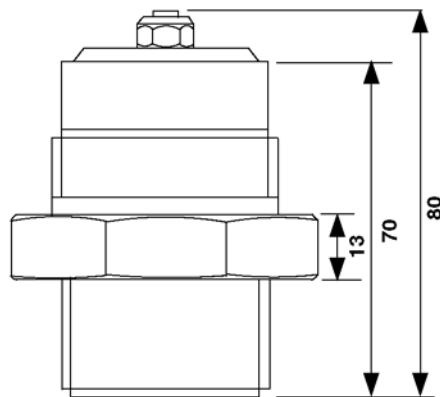
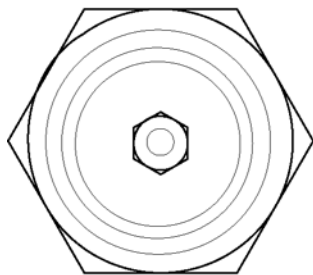
The check valve is of a ‘mushroom pattern’ type which is lifted by the agent discharging into the manifold.

Equivalent lengths are as follows:

Check Valve Size	Equivalent Length (metres)
32mm	15.285*
50mm	12.02*

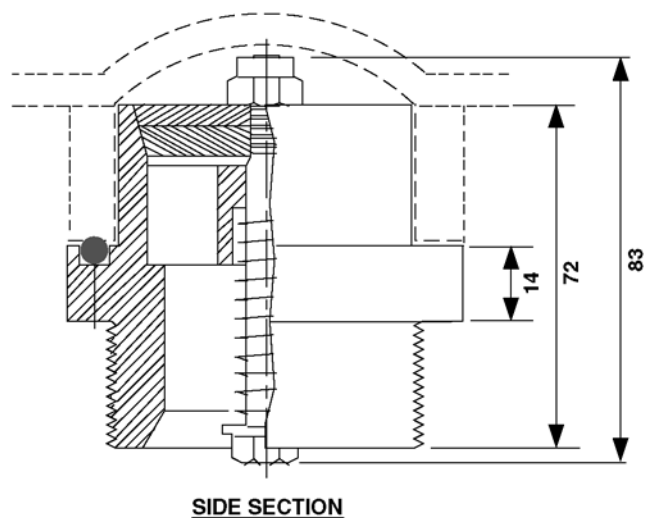
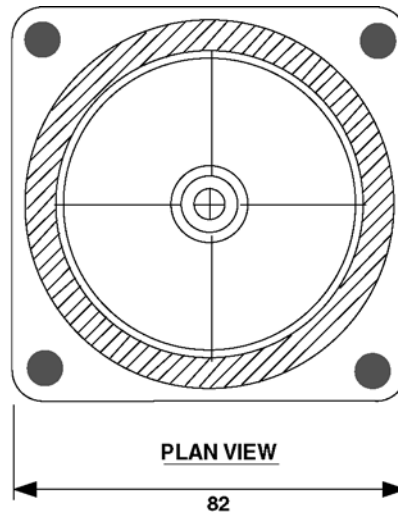
* Equivalent length includes the Discharge Hose and the Check Valve.

32mm Check Valve



Part No. 302-205-008

50mm Check Valve



SIDE SECTION

Part No. 302-205-009